



NEW VISION[®]
SPORTSTER

Fifth Wheels



Toy Haulers



37Kx2 shown with Aspen décor and upgraded cherry wood

NEW VISION[®]
SPORTSTER
by K-Z

Pull up a chair at your dining table situated just steps from the kitchen (table and chairs optional).

New Vision Sportster by K-Z is designed for active people like you. Whether you're packing up the family for a week-long adventure or the guys or gals are heading out for a weekend of off road riding, this unit is equipped to take you on great adventures.

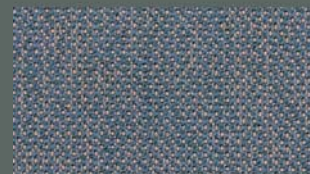
Amber



Aspen



Blue Ridge





37Kx2 shown with optional Bedroom Loft

On your next get-away enjoy more of your time. Prepare meals fast with a high-output range, 22-inch oven, and overhead microwave. The contemporary look of stainless steel appliances is the perfect complement to the rich cherry wood finish.



Because it Rains!

Here at K-Z we know a little bit about camping, actually we know a lot about camping. One thing you can count on, it will rain. We randomly test our K-Z campers from every product line in our state of the art rain booth. The rain may spoil your fun outside, but it won't inside.



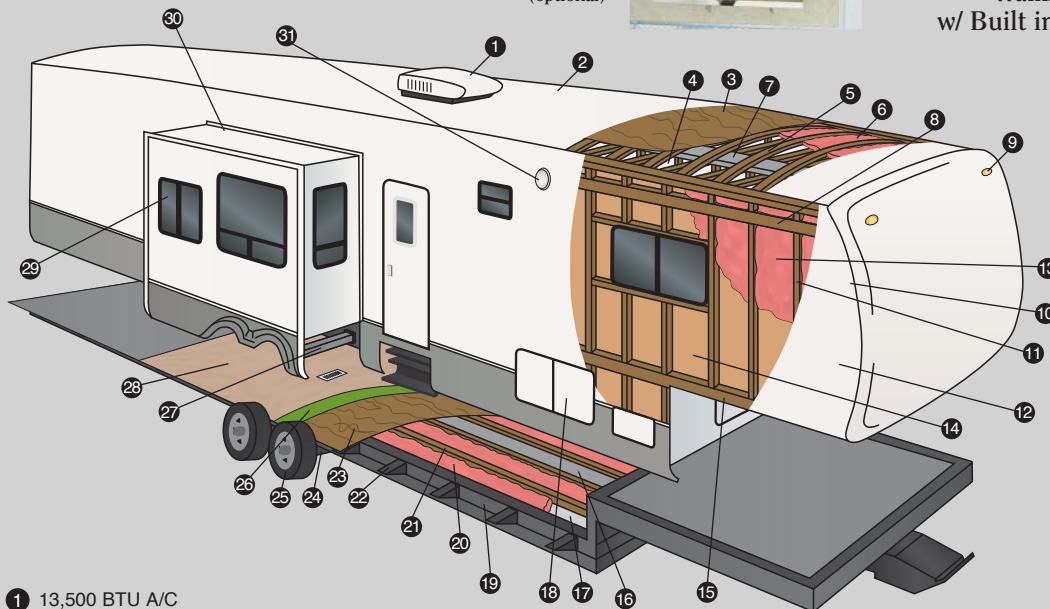
Adjustable Work Lights
(optional)



Garage Work Cabinet
(optional)



4 Audiovox Two Way
Walkie-Talkies
w/ Built in Charger
(optional)



1 13,500 BTU A/C

2 TPO Vinyl Roof

3 3/8" Decking

4 Vinyl Interior Ceiling Panel

5 4 1/2" Wood Truss Rafters, 16" O.C.

6 R-14 Batten Insulation

7 Insulated Ductwork

8 1 1/2" x 5" Heavy Duty Laminated Wood Headers

9 Exterior Clearance and Brake Lights

10 2x2 Wood Frame Front and End Walls

11 2x2 Wood Studs, 16" O.C.

12 Gel Coat Fiberglass Exterior with Integrated Luan Backing

13 R-7 Batten Insulation

14 Decorative Luan Wall Board

15 Single 8" Wood Stringer

16 Residential Style Ducted Heat Run in Floor

17 Darco® Moisture Barrier

18 Large Capacity Pass-Thru Exterior Storage with Radius Doors Front and Side for Easy Access

19 Heavy Duty I-beam Frame Construction

20 R-14 Batten Insulation

21 2x3 Wooden Floor Joists, 16" O.C.

22 Fully Welded Outriggers

23 5/8" Tongue and Groove Plywood

24 Heavy Duty Leaf Spring Axles

25 Heavy Duty Steel Wheels with Trim Rings and Center Caps

26 Residential Style Carpet Pad

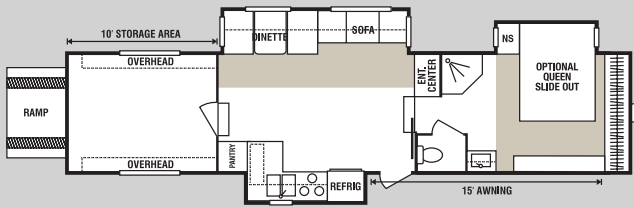
27 Rack and Pinion Electric Slide with Manual Override with 2x3 Box Tube Slide Out Ram

28 Residential Carpet or Linoleum

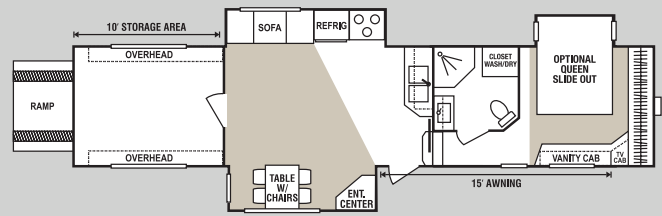
29 Tinted Safety Glass Windows

30 Triple Sealed Slide Outs

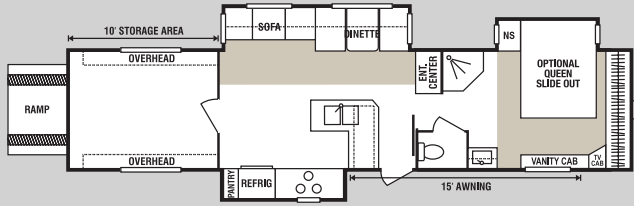
31 Exterior Security/Scare Lights



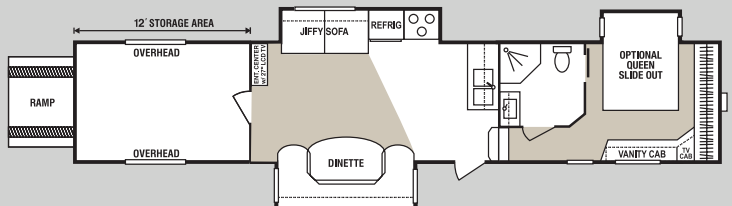
37FKx2 • UVW 12220 • Dry Hitch Wt. 3213 • NCC 4720 • Length 39'10"



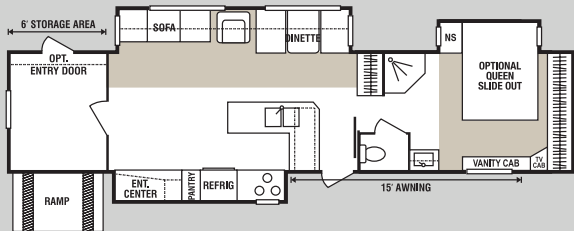
38SBx2 • UVW 11614 • Dry Hitch Wt. 2974 • NCC 6286 • Length 38'8"



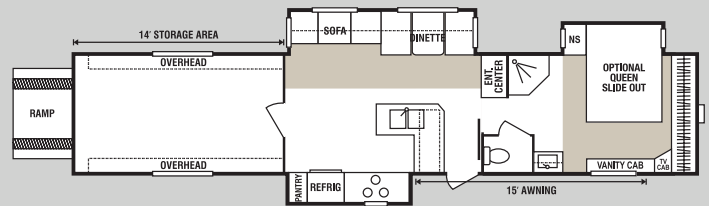
37Kx2 • UVW 12440 • Dry Hitch Wt. 2940 • NCC 4500 • Length 39'3"



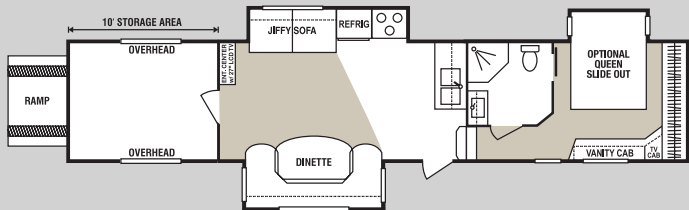
40P • UVW 12609 • Dry Hitch Wt. 2978 • NCC 5391 • Length 42'7"



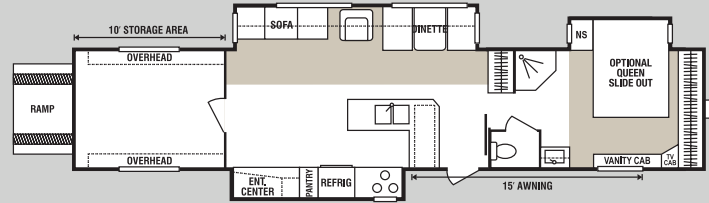
37KGx2 • UVW 12880 • Dry Hitch Wt. 2920 • NCC 4060 • Length 40'5"



41Kx2 • UVW 13200 • Dry Hitch Wt. 3220 • NCC 4800 • Length 43'3"



38P • UVW 12158 • Dry Hitch Wt. 2635 • NCC 5892 • Length 41'3"



41KGx2 • UVW 13653 • Dry Hitch Wt. 3195 • NCC 4347 • Length 43'8"

Open sesame...
the New Vision Sportster
comes standard with spring
assisted laminated ramp
door (without cables),
so you can load your ATV,
dirt bike or go-cart on
the run. Door can handle
2,500 pound load.





You can easily see your color TV from anywhere in your living space. TV antenna with booster and CD/DVD player with surround sound system are standard equipment, but you can upgrade to a satellite dish for ultimate entertainment.



Stand-alone sink and wall-mount mirrored medicine chest make efficient use of space in your luxurious master suite.



Your comfortable queen bed tucks into an alcove for coziness and a more roomy bedroom (slideout optional).



The attractive cherry wood (optional) vanity is built for ultimate storage so you can take along plenty of supplies.

	37FKx2	37Kx2	37KGx2	38P	38SBx2	40P	41Kx2	41KGx2
UVW (Unloaded Vehicle Wt.)	12220	12440	12880	12158	11614	12609	13200	13653
Dry Hitch Wt.	3213	2940	2920	2635	2974	2978	3220	3195
Dry Axle Wt.	9007	9500	9960	9523	8640	9631	9980	11550
NCC (Net Carrier Capacity)	4720	4500	4060	5892	6286	5391	4800	4347
GVWR	16940	16940	16940	18000	17900	18000	18000	18000
Exterior Width	102"	102"	102"	102"	102"	102"	102"	102"
Exterior Length	39'10"	39'3"	40'5"	41'3"	38'8"	42'7"	43'3"	43'8"
Exterior Height (with Air Conditioner)	149"	149"	149"	149"	149"	149"	149"	149"
Refrigerator (cu. feet)	6 cu.'	6 cu.'	6 cu.'	6 cu.'	6 cu.'	6 cu.'	6 cu.'	6 cu.'
Water Heater Cap. (gal. – G/E with DSI)	6	6	6	6	6	6	6	6
Fresh Water Cap. (gal.)	100	100	100	100	100	100	100	100
Waste Water Cap. (gal.)	50	50	50	50	50	50	50	50
Gray Water Cap. (gal.)	50	50	50	50	50	50	50	50
LP Gas Cap. (lbs.)	60	60	60	60	60	60	60	60
Furnace BTUs (1,000's)	30	30	30	30	30	30	30	30
Tire Size	16"	16"	16"	16"	16"	16"	16"	16"

Standard Convenience Package

- EZ Lube Axles
- 13,500 BTU A/C
- Gel Coat High Gloss Exterior
- Hi Output Range w/ Auto Igniter and 22" Oven
- Tinted Safety Windows
- Foot Flush Toilet
- Water Heater By Pass
- TV Antenna w/ Booster
- Two Kitchen Sink Covers
- Microwave
- Awning

Standard Convenience Plus Package

- Fold Away Entry Handle
- Electric Power Front Jacks
- Ladder
- 10 Gal. Gas/Elec. Water Heater DSI
- 50 Amp Service
- Stove Cover
- Black Tank Flush System
- Posterest Mattress
- Color TV
- Two Security Lights
- Stabilizer Jacks
- Shock Absorbers
- Spare Tire
- Spare Tire Hoist
- Skylight over Shower
- Wired for Satellite
- Raised Panel Refer Front
- AM/FM CD DVD w/Surround Sound

Comfort Package

- 15,000 BTU A/C
- Day-Night Shades
- Exterior Shower
- Heated Holding Tanks and Enclosed Underbelly
- Ceiling Fan
- Fluorescent Lights in Ceiling
- Border Tape
- Flex Foil Insulation
- Hide-a-Bed
- 8 Cu.' Refrigerator

Additional Options

- Bedroom Slide
- Fantastic Fan (LR/BR/Cargo)
- Roll Out Tray
- "G" Rated Tires
- Second Exterior Entry Door in Cargo
- Helmet Holder
- Ramp Extension/Threshold Ramp
- Wired for Generator
- Bedroom Loft
- Outside Entertainment Center
- Walkie-Talkies
- Aluminum Frame
- Aluminum Wheels
- Plumbing for Washer/Dryer in Cargo
- Recliners (37KG and 41KG)
- Satellite Dish
- Table and Four Chairs
- CSA (Canadian Required)
- Pull Down Screen Wall
- Diamond Plate on Sidewalls
- Tuff Ply on Door/Floor
- Power Bed in Cargo
- Tie Down Rings/Rails
- Cherry Wood
- Install Onan Generator (LP/Gas)
- Fuel Cell w/ Pump Station w/ Fuel Gauge
- Adjustable Work Lights
- Work Cabinet

2X2 WARRANTY – The K-Z 2x2 Warranty is a manufacturer's warranty. Each K-Z product is warrantied to the original purchaser for twenty-four (24) months from the original date of purchase. Coverage includes appliances, components, construction and FULL structure. Our warranty is also transferable within the first two (2) years for a small processing fee. For a copy of the warranty with full terms and conditions, ask your local K-Z Dealer or visit our web site at <http://www.kz-rv.com>.

VEHICLE LOADING – Every effort has been made to provide the greatest number of options for the recreational owner. Each owner is responsible to select loads allowing the recreational vehicle to remain within the manufacturer's specified chassis weight limits. Do not overload the recreational vehicle.

UNLOADED VEHICLE WEIGHT (UVW) – The typical weight of this trailer as built at the factory. The UVW does not include cargo, LP gas, fresh water, options or dealer-installed accessories.

GROSS VEHICLE WEIGHT RATING (GVWR) – The maximum permissible weight of the trailer, including the UVW plus passengers, all cargo, personal items, fluids, options and dealer-installed accessories. The GVRW is equal to or greater than the sum of the UVW and the NCC.

NET CARRYING CAPACITY (NCC) – The maximum weight of all passengers, personal items, fresh water, food, tools, LP gas, other cargo and dealer-installed accessories* that can be carried by the trailer. NCC is equal to or less than GVWR minus UVW.

* The addition of options will decrease the NCC.

It is important for your safety and enjoyment that your tow vehicle be adequately sized and equipped to tow and handle the GVWR of the RV you select. Review weights and rating of your tow vehicle and consult a competent advisor for questions or advice. Whether you are new to RVing or a seasoned veteran, get a feel for the performance of your tow vehicle and the RV together before heading out on the roadways. When you tow an RV, you must drive differently than you do when driving a single vehicle. Practice hooking up, driving, backing up and braking in a safe environment or seek out professional instruction.

See specification chart above. K-Z affixes a weight label to each new RV which lists weight information for that vehicle.

NOTE: This information is intended as a guide only. Weights of individual vehicles are approximate. Consult your Owner's Manual for complete loading, weighing and towing instructions. All weights may vary.

Awarded to K-Z
Six Years in a Row!



Dealer:



Due to continual research and advances, manufacturer reserves the right to change specifications, design, price and equipment without notice, and assumes no responsibility for any error in this literature. Some items shown are not included as standard or optional equipment.

©2007K-Z

2/1/07 8M